



# iNET



**Last modified: 3/10/11**

Copyright© 2011 Digital Accessories Corporation. All Rights Reserved.

Information in this document is subject to change without notice. The software may be used or copied only in accordance with the terms of the EULA. No part of this publication may be reproduced, stored in a retrieval system, or transmitted in any form or any means electronic or mechanical or photocopying and recording for any purpose other than the purchaser's personal use without the written permission of Digital Accessories Corporation.

Digital Accessories Corporation (DAC)

**Please note:** DAC operates through authorized distribution dealers. If you are an end-user, please contact the local dealer who sold you the product for technical support or future sales.



# Table of Contents

- Getting Started ..... 3
  - What you will need to know before installation ..... 3
- Installation ..... 4
  - Minimum System Requirements ..... 4
  - Installation..... 5
- Using iNet..... 7
- Configuration ..... 8
  - General ..... 8
  - Advanced..... 10
  - Print Options ..... 12

# Getting Started

iNet is a powerful, yet intuitive and user-friendly transcription application for Voice Solutions Phoenix Servers from DAC. It can be used on your local network or across the internet.

## What you will need to know before installation

- Does your computer meet the system requirements?  
(See **Installation>Minimum System Requirements**)
- Do you have an iNet foot control from DAC? The product key is embedded in the foot control. Using another third-party USB foot control will cause iNet to run in demo mode.

# Installation

Installing iNet is quick and simple. Before installing, verify the destination computer meets the system requirements below.

## Minimum System Requirements


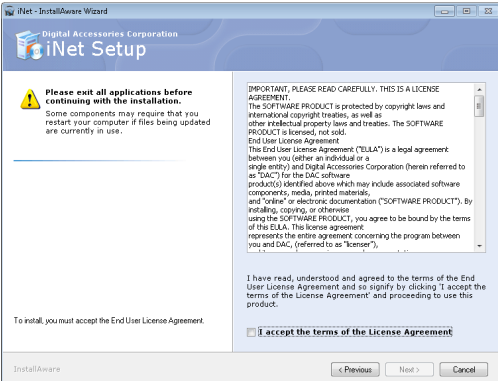
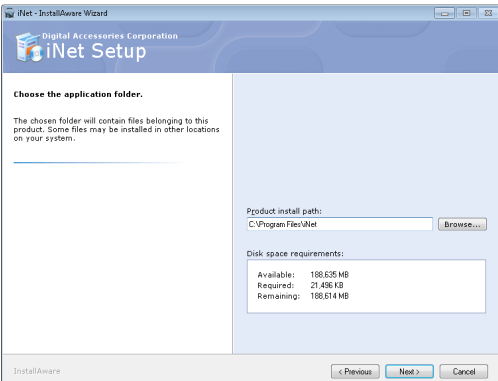
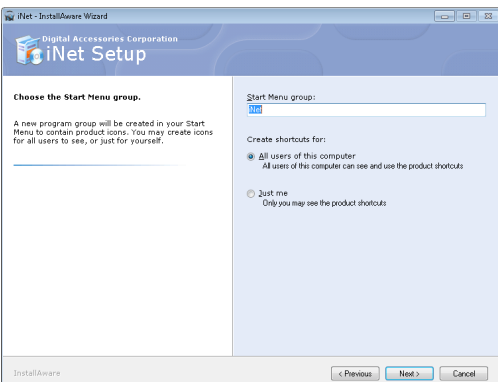
### Operating Systems:

- Microsoft® Windows® XP with SP3 (32-bit)
- Microsoft® Windows® 2003 Server R2 SP2 (32-bit)
- Microsoft® Windows® Vista with SP1 (32-bit)
- Microsoft® Windows® 2008 Server R2 (32-bit & 64-bit)
- Microsoft® Windows® 7 (32-bit & 64-bit)

### Hardware:

- Intel® Pentium IV® (or AMD equivalent)
- 2GB Memory (1GB for Windows XP)
- 100MB Hard Drive space
- 1 USB port (1.0 or higher)
- Sound Card
- High-speed Internet Connection (unless on local network)

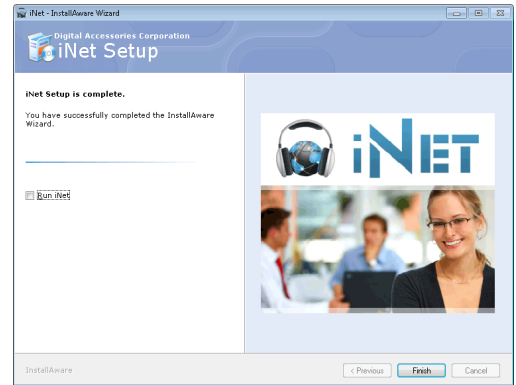
# Installation

<p><b>Step 1</b></p>	<p>Insert the CD and select <b>iNet</b> from the screen that appears.</p> <p><b>Note:</b> If the setup does not automatically launch, go <b>My Computer</b> and double-click your CD drive.</p>	
<p><b>Step 2</b></p>	<p>Click <b>Next</b> on the first screen.</p> <p>Check <b>I accept the terms of the License Agreement</b>.</p> <p>Click <b>Next</b>.</p>	
<p><b>Step 3</b></p>	<p>Select the path you want iNet to be installed or simply leave the default path.</p> <p>Click <b>Next</b>.</p>	
<p><b>Step 4</b></p>	<p>Select whether you wish desktop shortcuts to be installed for <b>All user on this computer</b> or <b>Just me</b>.</p> <p>Click <b>Next</b>.</p> <p>A confirmation screen will appear. Click <b>Next</b>.</p>	

**Step 5**

This will begin the installation process. Please wait while iNet is installed.

Once the installation is complete, click **Finish** to exit the setup.



**Step 6**

Plug the iNet foot control into an empty USB slot.

**Installation is complete!**



# Using iNet

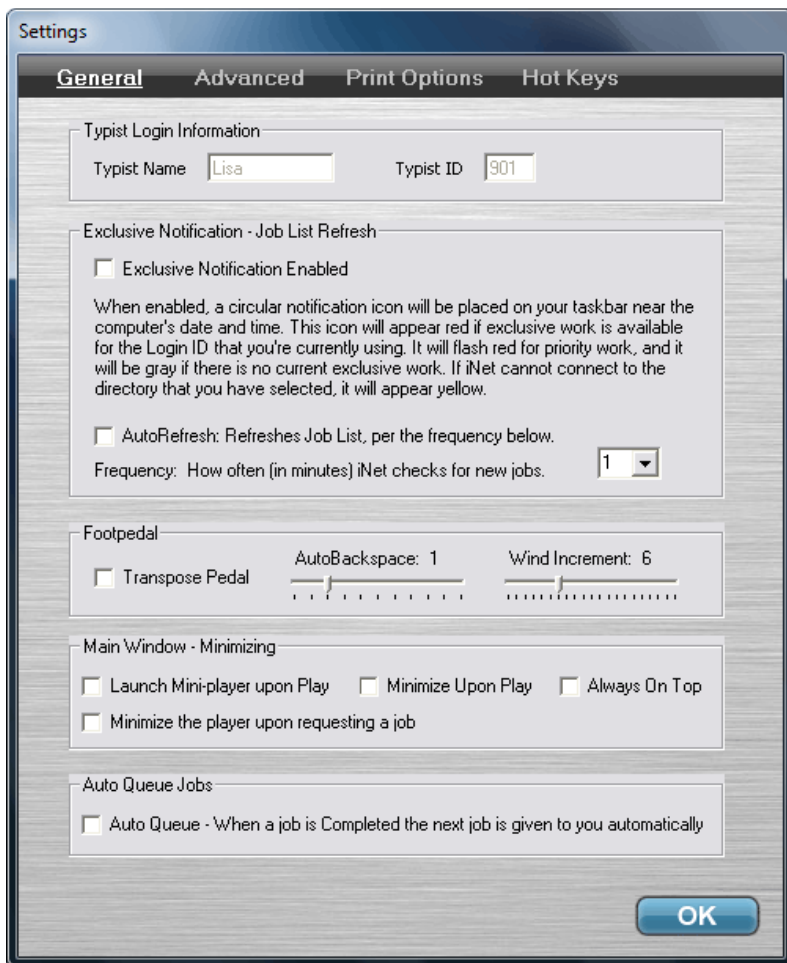
For instructions on how to use iNet, please view the video tutorials. You may access these from iNet by going to **Help>Video Tutorials** in the menu bar.

Alternatively, you can view the tutorials on our web site at [www.dacsolution.com/support/inet3](http://www.dacsolution.com/support/inet3).

# Configuration

You may access the configuration screen by going to **File>Settings** in the menu bar.

## General



### Typist Login Information

This is required to log onto the server. You need to enter the Typist ID that was assigned to you.

### Exclusive Notification – Job List Refresh

When the **Exclusive Notification Enabled** box is checked, a circular notification icon will be placed on your system tray near the computer's date and time. This icon will appear red if exclusive work is available for the Typist ID you entered. It will flash red for priority work and be gray if there is no exclusive work available. If a connection to the server cannot be established, the icon will be yellow.



**Auto Refresh**

Your Job List will refresh automatically based on the **Frequency** setting.

**Frequency**

This determines how often (in minutes) iNet checks for new jobs. You may select one of the preset options or enter any number from 1-120.

**Transpose Pedal**

The Rewind/FastForward buttons on your foot pedal will be switched, making the right pedal FastForward and the left pedal Rewind. Play is always the center pedal.

**AutoBackspace**

This determines (in seconds) how big of an increment the dictation will automatically back up each time you press Play. You may set it from 0 (disabled) to 5 seconds.

**Wind Increment**

This determines (in seconds) at what increment you will rewind or fast forward through a dictation. You may set it from 0-20 seconds.

**Launch Mini-player Upon Play**

iNet will switch to mini-player mode when you go into Play.

**Minimize Upon Play**

When you go into Play, iNet will minimize to the taskbar.

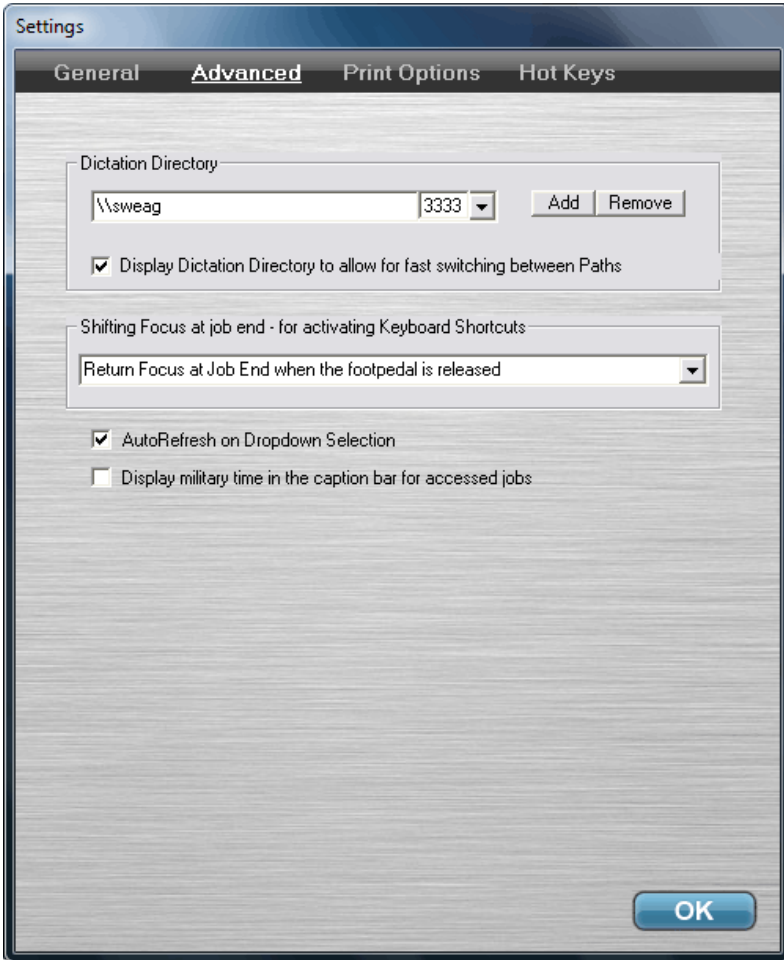
**Always On Top**

iNet will always appear above other applications, regardless of which one has focus.

**Auto Queue Jobs**

When a dictation is **Completed**, the next job in your queue will automatically be requested.

# Advanced

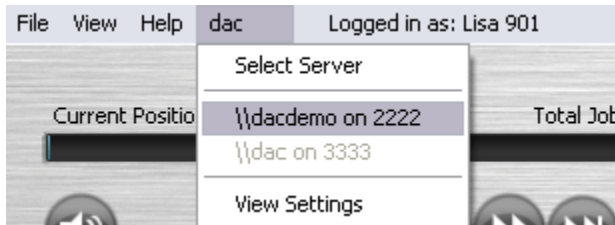


## Server Path

This is the path to the Voice Solutions Phoenix server. To change the server path, type a new path in the box and then click **Add**. The path should start with \\ and then be followed by the server's name or IP address. You may save several different paths, but iNet can only connect to one server at a time. Click **Remove** to delete a path from the drop-down menu.

### Display Server path for fast switching

This allows you to click the server name in the menu bar and quickly switch to other saved paths.



### **Shifting Focus at job end (for activating keyboard shortcuts)**

In order for keyboard shortcuts to work, iNet must be the application in focus. Typically, when typing, your word processor or other application will be in focus. When you get to the end of a dictation, though, iNet can do one of the following 3 options:

**Never Return Focus** – The focus will not be changed.

**Return Focus when the foot pedal is released** – iNet will receive focus when the foot pedal is released the first time after reaching the job's end.

**Return Focus when the foot pedal is depressed a second time** – iNet will receive focus when Play on the foot pedal is released and then tapped after reaching the job's end.

### **Auto Refresh on Dropdown Selection**

If enabled, the **Job List** will refresh automatically when a new filter option is enabled or changed.

### **Display military time in the caption bar for accessed jobs**

A job's **AuthTime** by default is in the 12 hour am/pm format. This changes the format to 24 hour military time when displayed in the caption bar.

## Print Options

There are 17 different data columns that can be shown in a Job List report. To include that column in the report, check the box beside it.

